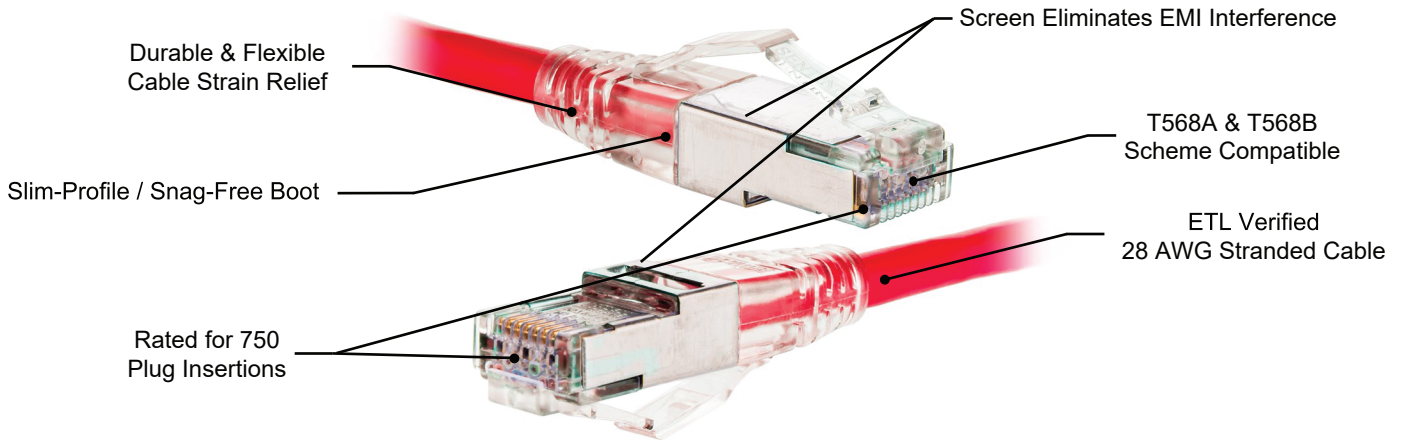
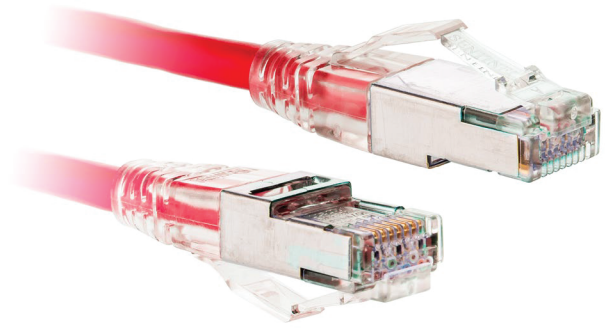


Category 6A 28 AWG Screened Patch Cords

KEY FEATURES

- Slimmer diameter offers additional flexibility & easier routing through cable management
- Protection against ANEXT & EMI
- 100% factory tested per ANSI/TIA-568-C.2 to ensure category 6A component performance
- Supports performance of Power over Ethernet
- ETL verified screened 28 AWG stranded cable
- Snagless design protects the plug latch
- Meets IEEE 802.3an 10-Gigabit Ethernet transmission requirements



Category 6A 28 AWG Screened Patch Cords

PART NUMBER	DESCRIPTION
C6AS-328CC-LFB	Category 6A 28 AWG Screened Patch Cord with Snag-Proof Boots

Specify cable jacket color by substituting CC in P/N for the following:



Specify cable length by substituting L in P/N for the following:

3: 3 ft **5:** 5 ft **7:** 7 ft **10:** 10 ft **15:** 15 ft **20:** 20 ft **25:** 25 ft

P/N Example: C6AS-328BU-3FB - Cat 6A 28 AWG Screened Patch Cord with Snag-Proof Boots, Blue, 3 ft
Custom cable lengths available, contact customer service.

SPECIFICATIONS

TRANSMISSION PERFORMANCE

ANSI/TIA-568-C.2: meets or exceeds category 6A (1-500 MHz) specifications

TRANSMISSION MEDIA

4-pair stranded unscreened twisted pair (UTP)

WIRING SCHEME

ANSI/TIA/EIA-568-C.2: T568A & T568B
ISO/IEC 11801 2nd Ed.: 8-position pin/pair assignment (1-2/3-6/4-5/7-8)

CONSTRUCTION

Assembly: 4 pairs, 7 strands 28 AWG, UTP

Insulation: High density polyethylene

Jacket

Dimensions: Diameter < 0.25 in (6.35 mm)

Material: Fire retardant PVC compound

Plug Housing: High density polyethylene

IDC Blades: Phosphor bronze, min 50 μ m of gold plating over 100 μ m of nickel in contact area

MECHANICAL

Retention: 50 N (11 lbf) for 60 ± 5 s

Mating Cycle Life: Min 750 cycles

Tensile Strength: ≥ 20 N per wire

ELECTRICAL

Insulation Resistance: Min 500 M Ω m @ 100 Vdc

Dielectric Withstanding Voltage:

1,000 Vdc/ac peak contact-to-contact @ 60 Hz for 1 min

1,500 Vdc/ac peak contact-to-contact @ 60 Hz for 1 min

Contact Resistance: Max 20 m Ω m

Current Rating: See below

ENVIRONMENTAL CONDITIONS

Operating Temperature: 14 $^{\circ}$ F to 140 $^{\circ}$ F (-10 $^{\circ}$ C to 60 $^{\circ}$ C)

Storage Temperature: -40 $^{\circ}$ F to 158 $^{\circ}$ F (-40 $^{\circ}$ C to 70 $^{\circ}$ C)

Operating RH: 93% Max (non-condensing)

COMPLIANCE

ANSI/TIA-568-C.2, IEEE 802.3 ab, FCC Part 68 Subpart F, UL 94V-0

APPLICATIONS

X.21, V.11, S0, ISDN, CSMA/CD 10BASE-T, 100BASE-TX, 100BASE-T4, 100BASE-T2, 1000BASE-T, 10GBASE-T, TR 4/16/100, 100BASE-VG, ATM LAN 25/51/155, TP-PMD

WARRANTY

5 - Year Limited Component

Figure 1: Current Rating

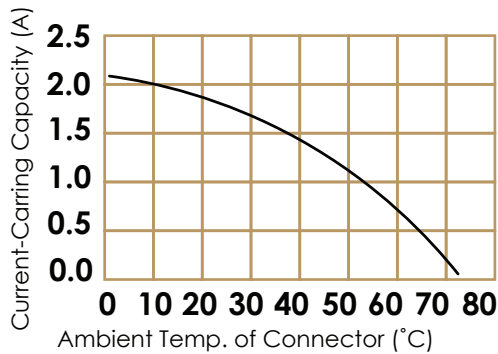


Figure 2: Cable Structure

